

NOTES:

- REMOVE WHITE AND YELLOW TRUNK FROM BALL AND CANOPY.
- SOAK ROOT BALL AND PLANT PIT IMMEDIATELY AFTER INSTALLATION.
- STAKING IS REQUIRED FOR ALL TREES IN ROW OR LINES.
- REMOVE EXCESS SOIL FROM SITE AND GRASS/SPREAD OF IN A LEGAL MANNER.
- NEEDED UNLAWFUL, OBTAINED MARKS.

ALL TREES SHALL MEET NATIONAL STANDARDS FOR WINDFIRM STOKES (ANSI Z601-2004) FOR EXAMPLE: CALIFORNIA HEAVY (DIA 2.0\"/>

FOR SINGLE AND MULTI-STEM TREES) NOT TO SCALE
DATE: 04/01/16

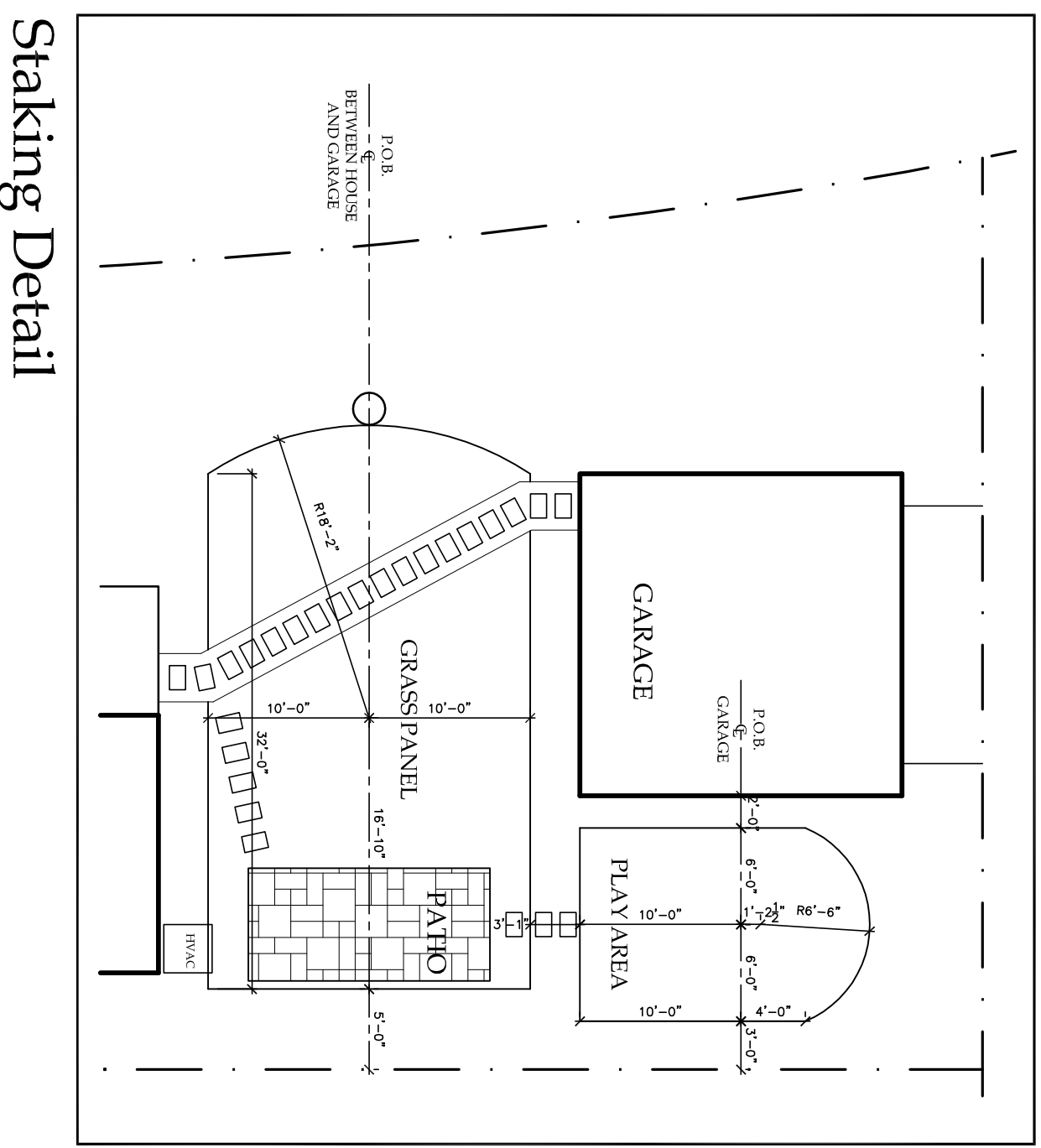
NOTES:

- SOAK ROOT MASS OF CONTAMINATED PLANT MATERIAL.
- REMOVE CONTAMINATED LAMBS AT FACTORY PLANTING AREA.
- TRAP PLANTING WAS TRAP FACTORY PLANTING AREA.
- OFFICER COLLAR AROUND EACH SHRUB WHEN INSTALLATION SYSTEM IS PRESENT.
- SOAK PLANT MASS IMMEDIATELY AFTER INSTALLATION.

DATE: 04/01/16

CITY OF CHARLOTTE
LAND DEVELOPMENT STANDARDS
INCURS CHARLOTTE #11

CITY OF CHARLOTTE
LAND DEVELOPMENT STANDARDS
INCURS CHARLOTTE #11



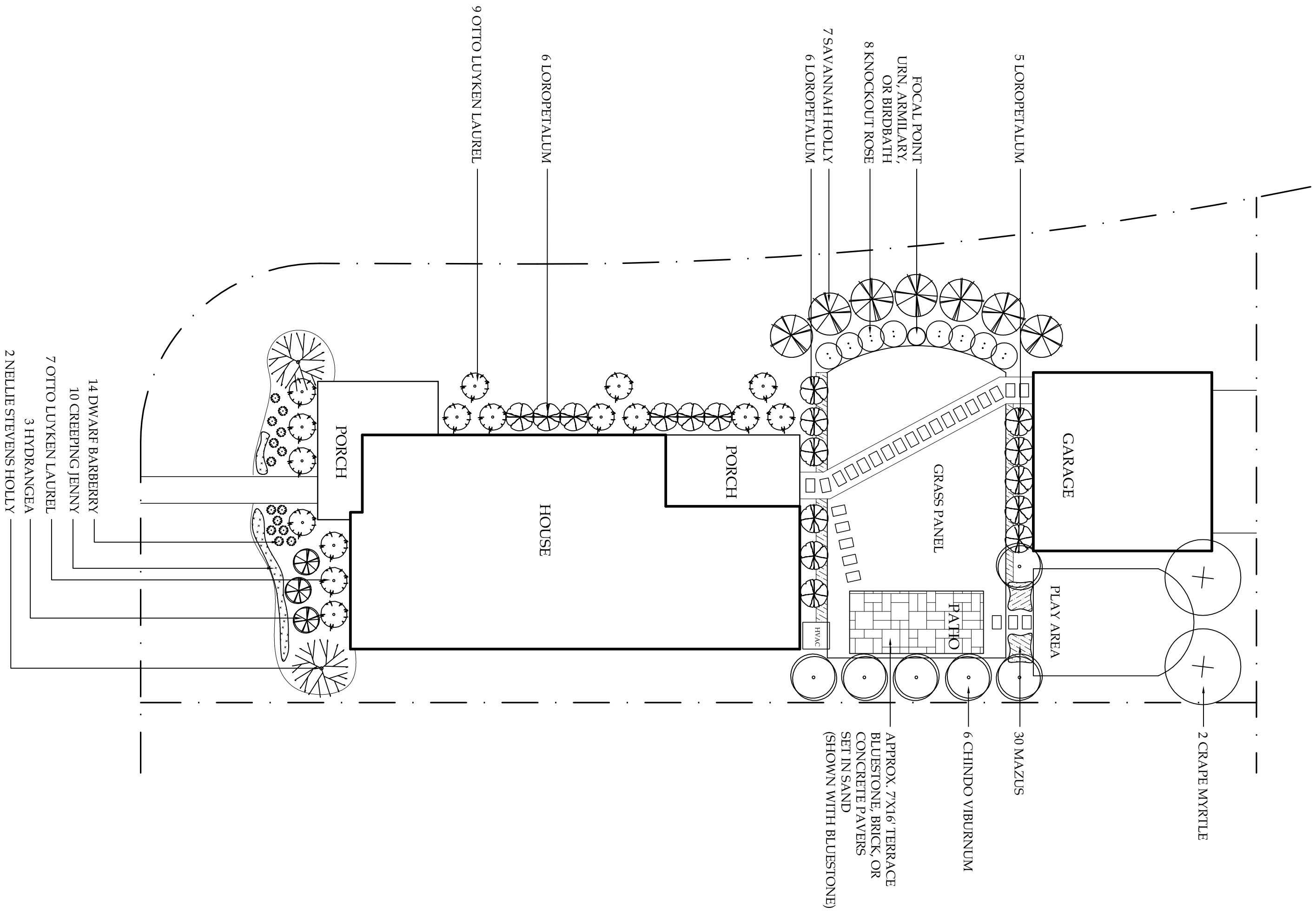
Staking Detail

Plant Schedule A

#	Size	Description	Color	Spacing	Notes
Trees					
2	10-12' Ht.	Crape Myrtle 'Apalachie'	Lavender	10' O.C.	
Shrubs					
6	5-6' Ht.	Chindo Vitumnum		5' O.C.	Evergreen
7	6-8' Ht.	Savannah Holly		5' O.C.	Evergreen
2	5-8' Ht.	Nellie Stevens Holly		4' O.C.	Evergreen
16	5-8' Ht.	Longpedalum		4' O.C.	Evergreen
8	5' gill.	Knockout Rose 'Red Double'	Pink	4' O.C.	
3	5' gill.	Hydrangea paniculata 'Lime Lime'	White	3' O.C.	
14	5' gill.	Betula thurbergii subsp. 'purpurea'	Red	3' O.C.	
					Reddish/purple
Ground Covers					
10	Quart	Creeping Jenny	Lime Green		
30	4" pot	Mezasa typhaleps	Purple		
		700 SF Bermuda Grass Seed or Sod			
		A.I. - As indicated on Plan.			

Notes:

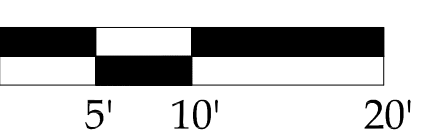
- Contractor to price irrigation.
- If irrigation is not installed, owner is responsible to water all plant material and grass.
- See lookbook on website for color and water feature options.
- If trees are to be placed with another variety, they should be small upright or columnar. Trees from other planters can be substituted.
- Contractor to use #4 Double Hammered Shielded Hardwood Mulch.
- Contractor to use #4 Double Hammered Shielded Hardwood Mulch.
- Contractor to use #4 Double Hammered Shielded Hardwood Mulch.
- Contractor to use #4 Double Hammered Shielded Hardwood Mulch.
- Contractor to insure positive drainage away from all buildings.
- Contractor to verify P.O.B. (Point of Beginning) and stake as indicated on construction documents prior to commencement of construction.



Master Plan - Scheme A



blair farris designs
 master planning + gardens + hardscapes
 704-737-1618 + 1919 Kensal Court Charlotte NC 28211 + blairfarris@mac.com
Brightwalk Homes
 Woodward Avenue 28206
Scheme A Planting Plan



Scale 1"=10'